

# CVES/CNES SERIES SURFACE MOUNT EDGE-LIT LED EXIT SIGN INSTALLATION & OPERATION INSTRUCTIONS

## IMPORTANT SAFEGUARDS

1. READ AND FOLLOW ALL SAFETY INSTRUCTIONS.
2. Review the diagrams thoroughly before beginning. Service of this equipment should be performed by qualified personnel.
3. All electrical connections must be in accordance with local codes, ordinances, and the National Electric Code. If you are unfamiliar with methods of installing electrical wiring, secure the services of a qualified electrician.
4. Before starting the installation, disconnect the power by turning off the circuit breaker or by removing the appropriate fuse at the fuse box. Turning the power off using the light switch is not sufficient to prevent electrical shock.
5. Do not use outdoors.
6. Do not let power supply cords touch hot surfaces.
7. Do not mount near gas or electric heaters.
8. Use caution when servicing batteries. Battery acid can cause burns to skin and eyes. If acid is spilled on skin or in eyes, flush acid with fresh water and contact a physician immediately.
9. Equipment should be mounted in location and at heights where it will not readily be subject to tampering by unauthorized personnel.
10. The use of accessory equipment not recommended by the manufacturer may cause an unsafe condition.
11. Do not use this equipment for other than intended use.
12. All servicing should be performed by qualified personnel only.
13. Allow battery to charge for 24 hours before first use.

## SAVE THESE INSTRUCTIONS

### UNPACK THE FIXTURE

Check the contents of the box. You should receive:

- 1-LED Edge-lit Exit
- 1-Canopy
- 1-Hardware bag

**NOTE: First turn off electricity.**

### Ceiling Mounting

1. Plug the remaining holes with appropriate color plug.
2. Attach crossbar to junction box, using junction box screws if needed. (not provided)
3. Remove side plate and open Aluminum housing cover. (see Fig. 1)
4. Assemble canopy with Aluminum housing. (see Fig. 3) Using holes "1" and "4", assemble canopy with (2) 10-24 screws and nuts.
5. Fix chevron(s) as required to EXIT panel and then remove the label from the panel

**NOTE: When CHEVRONS are being taped on the EXIT panel, you can not use it again once you remove it. Please be careful before removing chevron.**

6. Feed the leads from circuit board through center hole and make proper connections. See "ELECTRICAL CONNECTIONS" in below. You may use holding wire during wiring (see Fig. 4)
7. Using M4X40 screws supplied, tighten canopy to mounting plate.

8. Close Aluminum housing cover to sign. (see Fig. 2)
9. Assemble side plates and close Aluminum housing cover. (see Fig. 2)

### Side Mounting

1. Plug the remaining holes with appropriate color plug.
2. Attach crossbar to junction box, using junction box screws if needed. (not provided)
3. Remove side plate and open Aluminum housing cover. (see Fig. 1)
4. Assemble canopy with Aluminum housing. (see Fig. 6) Using holes "3" and "5", assemble canopy with (2) 10-24 screws and nuts.
5. Fix chevron(s) as required to EXIT panel and then remove the label from the panel after chevron(s) are being taped.  
**NOTE: When CHEVRONS are being taped on the EXIT panel, you can not use it again once you remove it. Please be careful before removing chevron.**
6. Feed the leads from circuit board through center hole and make proper connections. See "ELECTRICAL CONNECTIONS" in below. You may use holding wire during wiring (see Fig. 4)
7. Using M4X40 screws supplied, tighten canopy to crossbar.
8. Assemble sign housing to junction box and the close Aluminum housing cover. (see Fig. 2)
9. Assemble side plates and close Aluminum housing cover (see Fig. 2)

### Back Mounting

1. Plug the remaining holes with appropriate color plug.
2. Attach crossbar to junction box, using junction box screws if needed. (not provided)
3. Open Aluminum housing cover. (see Fig. 1)
4. Assemble canopy with Aluminum housing. (see Fig. 3) Using holes "1" and "4", assemble canopy with (2) 10-24 screws and nuts.
5. Fix chevron(s) as required to EXIT panel and then remove the label from the panel.  
**NOTE: When CHEVRONS are being taped on the EXIT panel, you can not use it again once you remove it. Please be careful before removing chevron.**
6. Feed the leads from circuit board through center hole and make proper connections. See "ELECTRICAL CONNECTIONS" in below. You may use holding wire during wiring (see Fig. 4)
7. Using M4X40 screws supplied, tighten canopy to mounting plate.
8. Assemble Aluminum housing to canopy using provided screws.
9. Connect charge battery wire to circuit board.
10. Assemble side plates and close Aluminum housing cover (See Fig. 2)

### ELECTRICAL CONNECTIONS

Make the proper supply lead connections. If using 120VAC, connect the black and white leads to the building utility. If using 277VAC, connect the orange and white leads to the building utility. Cap off unused wires. In all cases, use standard wire nuts in connection to leads. (See Fig. 5)



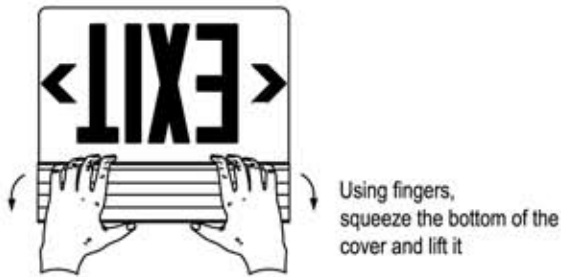


Fig. 1 Opening Aluminum housing cover



Fig. 2 Close Aluminum housing cover

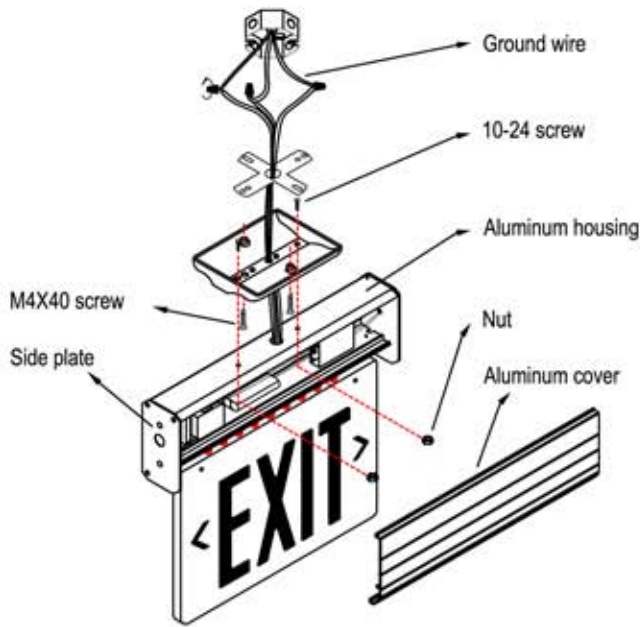


Fig. 3 Ceiling Mounting

**CAUTION:**  
Holding wire supports sign during wiring

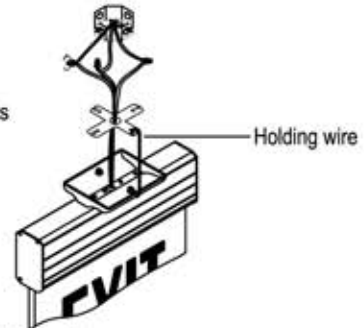


Fig. 4 Using holding wire

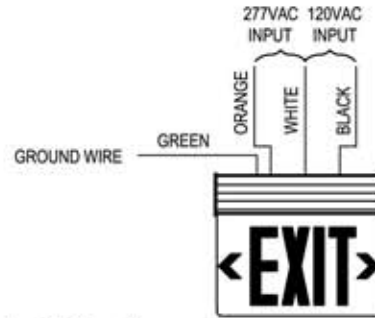


Fig. 5 Wiring diagram

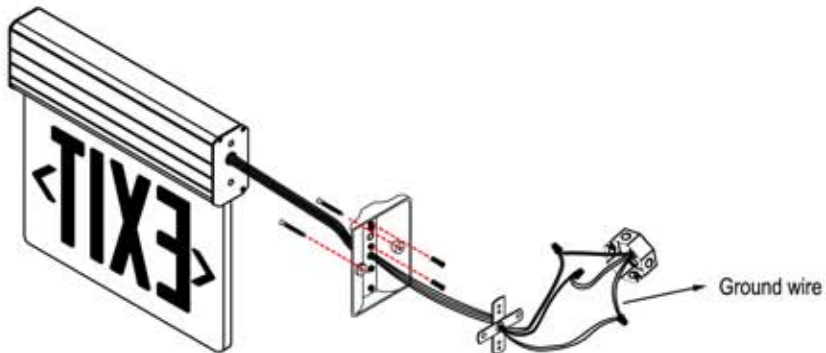


Fig. 6 Side Mounting

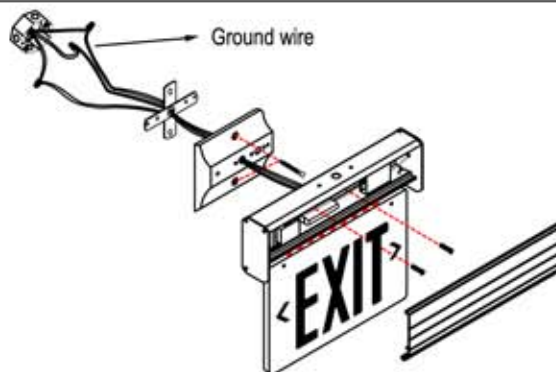


Fig. 7 Back (Wall) Mounting



Hubbell Lighting, Inc.