

Replacing An Emergency Lamp

1. Remove lens, and remove lamp. Replace with part number shown on replacement label. Replace lens and push "Test" button to check lamp operation.

Battery Replacement

1. **De-energize the AC supply to the unit. Failure to do so could result in an unsafe operating condition.**
2. Remove the unit from the back plate.
3. Disconnect the RED (+, positive) and BLACK (—, negative) leads from the battery terminals.
4. Remove the battery. Recycle responsibly.
5. Replace battery with part number shown on model label.
6. Reconnect the RED (+, positive) and BLACK (—, negative) leads to the battery terminals.
7. Reinstall the unit. Energize the AC supply and test the unit by pressing the "Test" button.



RECYCLING INFORMATION

All steel, aluminum and thermoplastic parts are recyclable.

NOTICE: Emergency units contain rechargeable batteries which must be recycled or disposed of properly.



SlimLite® SL1

Contemporary Twin Lamp Emergency Lighting Unit
Installation, Operation and Service Instructions



IMPORTANT SAFEGUARDS

When using electrical equipment, basic safety precautions should always be followed, including the following:

READ AND FOLLOW ALL SAFETY INSTRUCTIONS

1. Do not use outdoors.
2. Do not mount near heaters or hot surfaces.
3. Equipment should be mounted in locations and at heights where it will not be readily subjected to tampering by unauthorized personnel.
4. The use of accessory equipment not authorized by the manufacturer may cause an unsafe condition.

Caution: Halogen cycle lamps may be used in this equipment. Halogen cycle lamps operate at high temperatures. Do not store or place flammable materials near lamp.

To avoid shattering: Do not operate lamp in excess of rated voltage. Protect lamp against abrasion and scratches and against liquids when operating. Dispose of lamp with care.

5. Do not use this equipment for other than its intended use.
6. Servicing of this equipment should be performed by qualified personnel.
7. **Caution: Energize AC only after installation has been completed. Failure to do so could result in an unsafe operating condition.**
8. Test cycling: the Life Safety Code (NFPA 101) requires testing of emergency lighting units once a month for a minimum of 30 seconds, and once a year for a minimum of 90 minutes.

INSTALLER:

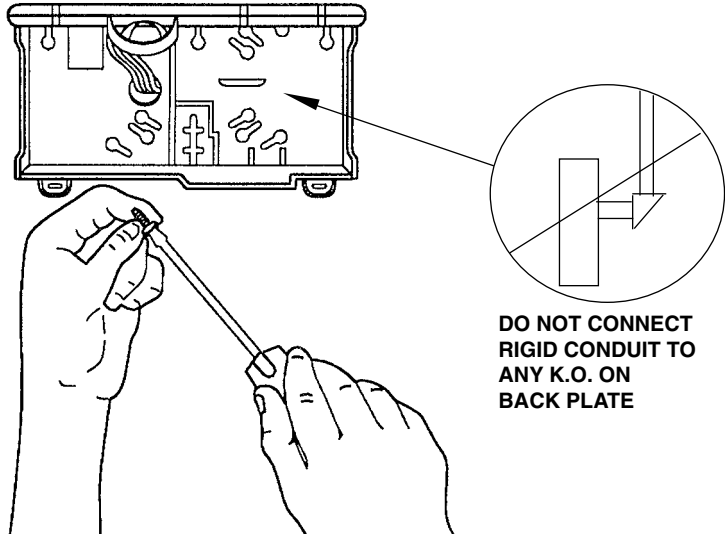
- SEE UNIT LABEL FOR ADDITIONAL MODEL SPECIFICATIONS
- SAVE THESE INSTRUCTIONS FOR USE BY OWNER/OCCUPANT

WARNING – This product contains chemicals known to the State of California to cause cancer, birth defects and/or other reproductive harm. Thoroughly wash hands after installing, handling, cleaning, or otherwise touching this product.

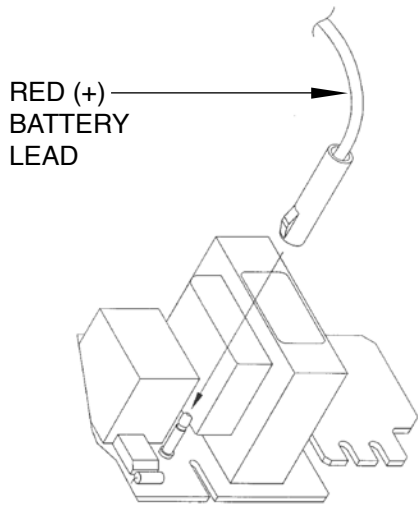
1300737
5100730



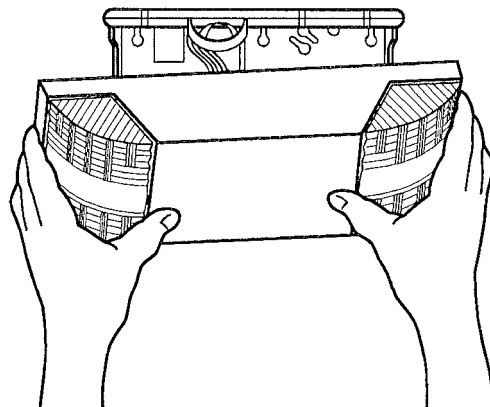
1. Make sure the AC supply is off before starting installation!



2. Remove appropriate KO's on back plate. Make electrical connections (see wiring diagram). Insulate unused lead. Secure backplate to outlet box or conduit end.

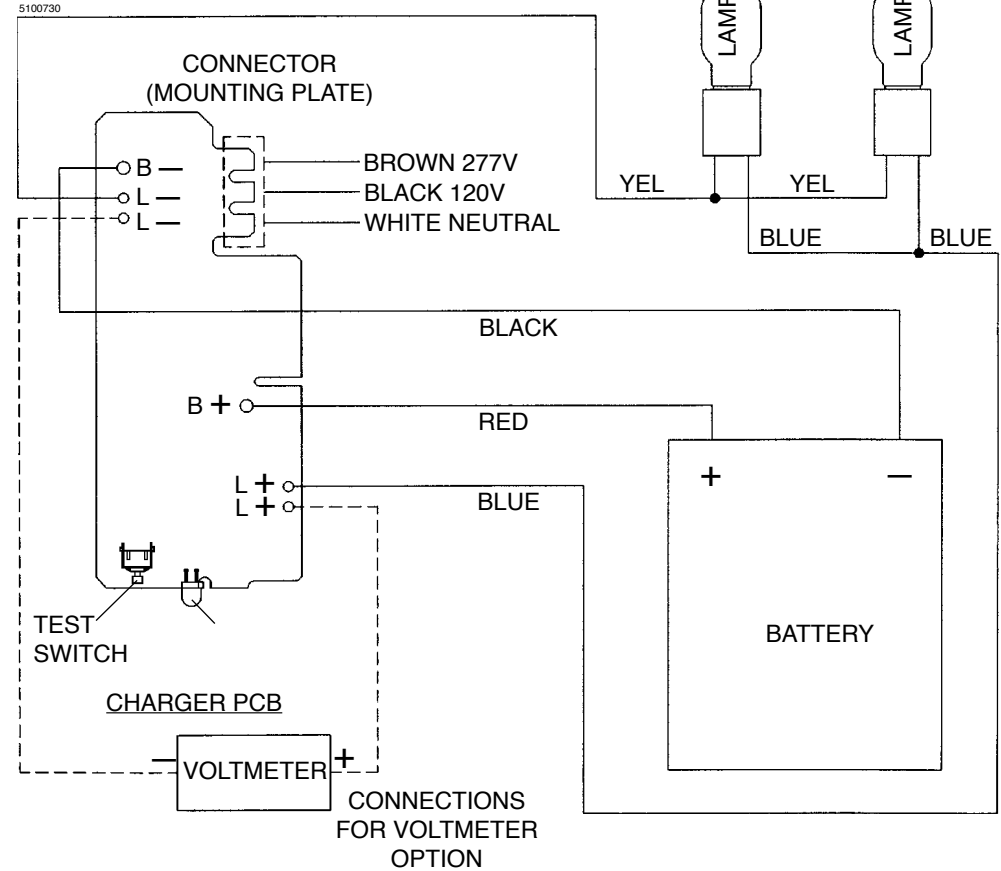


3. Connect the RED positive battery lead to the B+ terminal on the PC board (see wiring diagram).



4. Snap housing onto backplate.

Wiring Diagram



OPERATION

Placing The Unit In Service

Energize the AC supply. Push the "Test" button; both lamps should light.

Routine Test Cycling

1. Once a month: Press and hold the "Test" button for at least thirty (30) seconds. Both lamps should light.
2. Once a year: Perform a full battery conditioning cycle by turning off the unit AC supply circuit, and allow the unit to operate for 90 minutes in emergency mode.