



Surface Wall Mount



Recessed T-Grid
Ceiling Mount



Recessed Wall Mount



LiteGear[®]

Compact Central Lighting Inverter

Remote AC Power Supply for Emergency Egress Lighting

AUTHENTIC LIFE SAFETY PRODUCTS SINCE 1940

DUAL LITE

LiteGear®

COMPACT CENTRAL LIGHTING INVERTER

Rated at 100W, the LiteGear compact central lighting inverter provides emergency AC power to indoor or outdoor lighting fixtures designated as “emergency lighting” on the plans. It is compatible with incandescent, compact fluorescent, linear fluorescent and LED lamped fixtures. Typical indoor fixtures include fluorescent ceiling fixtures, wall sconces, and recessed down lights. Typical outdoor fixtures include wall packs, canopy squares, bollards and steplights.



LiteGear Recessed T-Grid Ceiling Mount Model with Outdoor Wallpacks



Installing the emergency power supply indoors protects the batteries from extreme hot and cold temperature conditions. This maximizes emergency “run time”, prolongs their useful life and reduces maintenance costs. With three enclosure styles and a 1,000-foot unit-to-load “range”, the LiteGear central lighting inverter can be installed anywhere indoors. The surface mount model includes keyhole slots for easy wall installation. The recessed ceiling model “T” bar grid system easily accommodates a 2-foot tile opening. Eyelets for suspending the unit to the building’s structural members are included. A trim flange supplied with both wall and ceiling recessed models provides a professional finished installation.

When standard utility power is interrupted, the LiteGear central lighting inverter transfers from “standby” operation to emergency power in under 2 seconds. This is fast enough to maintain the rated illumination level of incandescent, fluorescent and LED equipped fixtures. Emergency power will be provided for a minimum of 90 minutes, in accordance with the provisions of the Life Safety Code (NFPA 101) and the International Building Code (IBC). When normal power returns, the LiteGear central lighting inverter automatically transfers the load back to the utility supply and begins the battery recharge process.

PRODUCT SELECTOR

Model Number	Input, Output Voltage	Enclosure Style	Total Watts For:			
			1½ Hours	2 Hours	3 Hours	4 Hours
LG1S	120/120 or 277/277	Surface Wall Mount	100	75	50	37
LG1R	120/120 or 277/277	Recessed Wall Mount	100	75	50	37
LG1T	120/120 or 277/277	Recessed Ceiling T-Grid	100	75	50	37

ACCESSORIES (Order Separately)

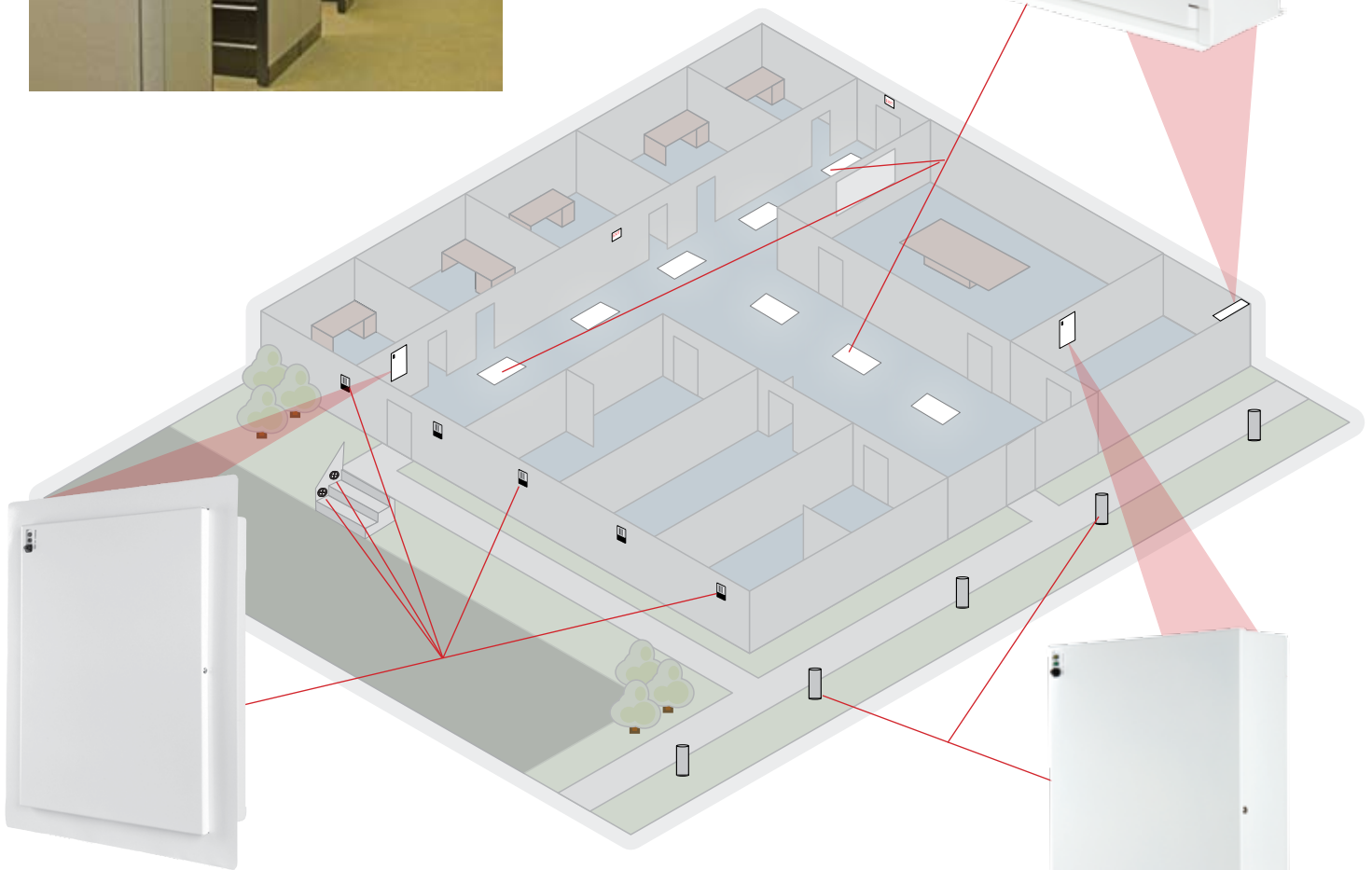
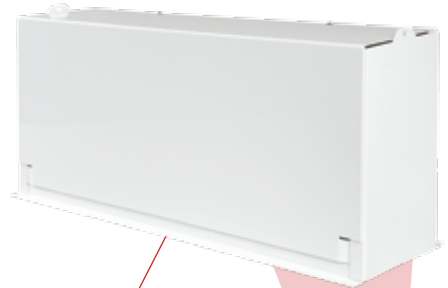
Model Number	Description
WGTW	Wire Guard for LG1S



***THE COST-EFFECTIVE, EFFICIENT, CONVENIENT WAY TO PROVIDE 100 WATTS
EMERGENCY AC POWER TO INDOOR OR OUTDOOR FIXTURES.***



**LiteGear Recessed T-Grid Ceiling with
Indoor Fluorescent Fixtures
(3) 32W Linear Fluorescent Lamps**



**LiteGear Wall Mount Recessed Model with
Outdoor Steplights and Wall Packs
(5) 20W LED or Incandescent Lamps**



**LiteGear Wall Mount Surface Mount
Model with Outdoor Bollards
(2) 42W Compact Fluorescent Lamps**



Hubbell Lighting, Inc. Life Safety Products • www.dual-lite.com

701 Millennium Boulevard • Greenville, SC 29607

Telephone: 864-678-1000 Fax: 864-678-1415

A Hubbell Lighting, Inc. brand with representatives' offices in principal cities throughout North America.

Copyright Hubbell Lighting, Inc., All Rights Reserved. Specifications subject to change without notice.



Hubbell Lighting, Inc.