

Emergency Cylinder Light

FEATURES

- Emergency lighting cylinders for wall or ceiling mounted commercial applications
- High impact, 5VA flame rated, UV stabilized, white thermoplastic cylinder
- Low profile, brushed aluminum black canopy housing
- Fully adjustable sealed beam type high output halogen lamp
- Maintenance-free lead-acid battery with fully automatic charger
- Temperature range: 20°C to 30°C (68°F to 86°F)
- UL 924 Listed



EMERGENCY LIGHTING

ORDERING INFORMATION

ESC2-0

MODEL

ESC2-0

ELECTRONICS

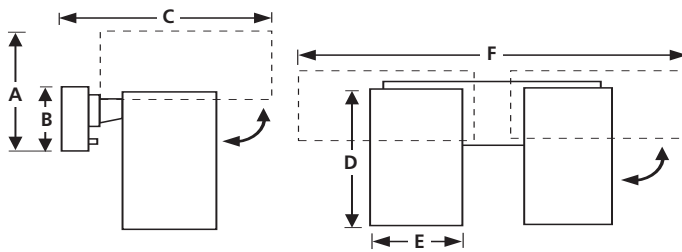
- 120/277 60 Hz VAC operation, test switch and LED AC-On indicator light
- Transformer isolation, surge, transient and low voltage disconnect protection
- Reverse polarity, short circuit and AC lockout protection

SPECIFICATIONS

BASE CATALOG NUMBERS	ELECTRICAL					
	OUTPUT VOLTS	OUTPUT WATTS		NO. CYLS.	STANDARD LAMP	REMOTE CAPABILITY
		1.5 HOURS	2 HOURS			
ESC2-0	6	12	--	2	6W Halogen	No

ACCESSORIES

MODEL	DESCRIPTION
F-TMK	Ceiling recess mounting kit
41G	Wire guard



UNIT MODEL NUMBER	DIMENSIONS					
	A	B	C	D	E	F
ESC2-0	10"	4¾"	10½"	8½"	5"	22"
	25.4 CM	12.0 cm	26.7 cm	21.6 cm	12.7 cm	55.9 cm