

DUAL LITE

Delite® Series

Architecturally styled emergency lighting twin cylinder units.



Catalog Number	
Comments	Type



Pilot light and test switch detail

Features

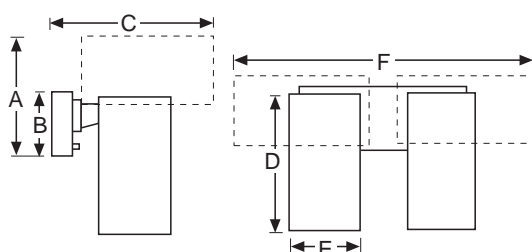
- Completely self-contained
- Provides 90 minutes of emergency lighting
- Maintenance-free battery
- Fully automatic, solid-state charger
- Automatic battery protection (LVD)
- Multidirectional swivel lighting head
- Universal transformer for 120 or 277VAC operation
- Attractive matte white cylinder on contrasting black swivel
- Low-profile, heavy duty steel canopy/connection box in black finish
- AC pilot light
- Test switch
- Operating Temperature Range: 20° to 30°C (68°F to 86°F)
- UL 924 Listed (Emergency Lighting)

Product Selector

Fixture Type	Model No.	Voltage	Output Watts			
			1.5 Hrs.	2 Hrs.	3 Hrs.	4 Hrs.
	ESC2-0	6	12	--	--	--
Accessories (order separately)						
	41G	Wire guard				
	F-TMK	Troffer mounting kit (recessed ceiling mounting)				

Dimensions

Dotted lines show heads in maximum horizontal position.



Model Number	Dimensions					
	A	B	C	D	E	F
ESC2-0	10 ¹ / ₄ " 24.1cm	4 ³ / ₄ " 11.4cm	12 ³ / ₄ " 29.2cm	8 ¹ / ₂ " 24.8cm	5" 12.7cm	23 ¹ / ₄ " 62.9cm



Hubbell Lighting, Inc.

Description

The DELITE Series ESC models consist of twin cylinder emergency lighting units for commercial and institutional facilities. Construction is of injection-molded thermoplastic and sturdy aluminum. The matte white cylinder on a contrasting black swivel is mounted on a brushed aluminum canopy/connection box. A single cylinder contains the battery, solid-state charger and transfer circuit. An AC pilot light and a test switch are mounted on the canopy. A multidirectional swivel allows for adjustment of the lighting cylinders.

Operation

Emergency lighting is provided for 90 minutes. Operation is completely automatic. The SCR solid-state charger maintains the battery at full charge. During emergency operation, damage from deep discharge is prevented by a low-voltage disconnect circuit. Upon restoration of normal power, the charger will begin a recharge cycle. It will bring the battery to full capacity within acceptable UL time standards. The charge is indicated by a pilot light. A test switch checks transfer operation, charging function and DC lamps. A universal transformer operates from 120 or 277VAC. Power consumption is 15 watts maximum.

Installation

The narrow-profile back plate adapts universally to any 3½" or 4" octagonal or 4" square wall box. Lag bolt holes are provided for surface mounting. The canopy contains the unit's connection box. Pivot construction allows for easy wiring of an already mounted unit.

Illumination

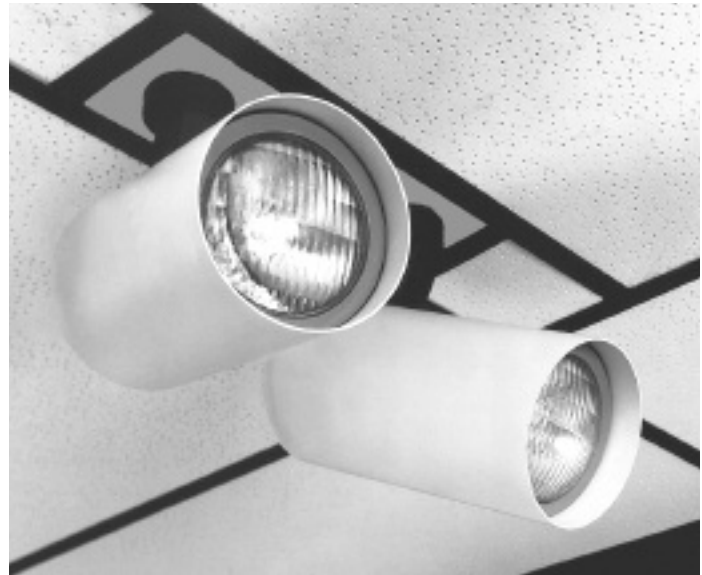
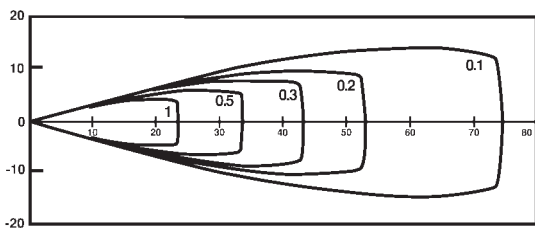
Standard illumination is provided using 6.0-watt halogen sealed beam type lamps especially designed for emergency lighting.

Photometrics

(Horizontal Isofootcandle Distribution)

Photometrics measured by independent testing laboratory

6.0-Watt Halogen Sealed Beam Type Lamp



Battery

Type: Maintenance-free lead-acid

Options and Accessories

A wire guard is available to provide an added measure of protection against impact damage (41G). Attractive, recessed mounting of Delite ESC units in suspended ceiling is provided by a troffer mounting kit (F-TMK). Options include auxiliary 3-conductor line cords for 120 or 277V operation.

Warranty

Unit and Electronics: 1 year full

Battery: 1 years full, 5 years pro-rata (6 years total)

Suggested Specifications

The emergency unit shall be Dual-Lite Delite Series model _____ designed cylinder with sealed, maintenance-free, lead-acid battery and fully automatic, solid-state charger with LVD and transfer circuit. The battery shall be capable of supplying the connected load for a minimum of 90 minutes. The charger shall provide full recharge within acceptable UL time standards. A low-profile, brushed aluminum canopy shall be provided as standard. A charge-rate indicator and test switch shall be provided installed in the lighting cylinder swivel assembly. The back plate shall mount to any standard 3½" to 4" octagonal or 4" square wall box or mount directly to wall. The canopy design shall allow for easy wiring of already mounted unit. Unit shall contain glare-free, 6-watt halogen sealed beam type lamps specially designed for emergency lighting and a universal transformer for 120 or 277VAC operation. Unit shall be provided for wall mounted as standard. Semi-recessed ceiling mounting shall be possible through the availability of a troffer mounting kit accessory.