



PGF1

High Performance LED Sconce

FEATURES

Application

The PGF1 is a maintenance -free indoor/outdoor die-cast architectural LED Sconce. It is wet location listed and offers pathway, perimeter or entry lighting at a mounting height of 8 to 10 feet.

Construction

Housing and mounting plate are constructed of 0.125" die-cast aluminum and the housing is fully gasketed. Lens is acrylic with 95% light transmission to reduce glare. The reflector is electro-polished aluminum with 95% reflectance. Housing is powder coated electro-deposition paint available in 2 colors. The PGF1 includes a field installable full cut-off shield to address "dark sky" compliant requirements. An optional 120VAC photo-control is also available.

Installation

Universal backplate knockouts for mounting to standard 3 1/2", 4" octagonal and 4" square electrical boxes. Backplate mounting is performed using installer supplied hardware. An adhesive-backed neoprene gasket is provided to ensure a waterproof seal. A 1/2" - 1/4 NPT threaded conduit opening is provided at the top of the enclosure and sealed with a closure plug. The housing "snaps" to the back plate by a "pin and socket" arrangement, and is secured with two Phillips head screws.

Electronics

Number of Lamps: 7 High Output LED's
Lamp Type: Solid State High Output LED's
Lamp Color: Cool White, 4300K
Total Lamp Output: 1067 Lumens
Lumen Maintenance: 50,000 hours
LED Light Engine: Constant current Driver meets UL1310 class 2 for SSL and FCC Class B, rated for 50,000 hours
Voltage Input: 120 to 277VAC, 50/60 Hz.
Input Power Requirements: 17.7 watts
Fixture Efficacy: 60.3 Lumens per Watt

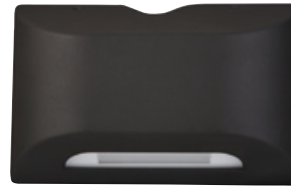
Compliances

CSA Certified to UL1598 for use in Wet locations

Warranty

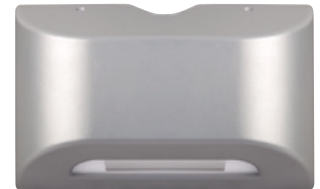
Five-year full unit

Catalog Number	
Comments	Type



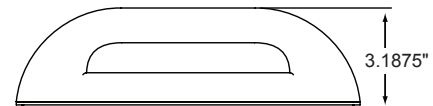
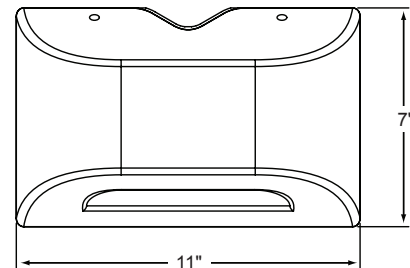
Dark Bronze

Patent No.
D627,916



Platinum Silver

DIMENSIONS



ORDERING GUIDE

PGF1

Series

Finish

Options

Z Dark Bronze
P Platinum Silver

-PC1 120VAC Photo-control

Dual-Lite • www.dual-lite.com

A Hubbell Lighting, Inc. brand with representatives' offices in principal cities throughout North America.

Copyright © Hubbell Lighting Inc., All Rights Reserved • Specifications subject to change without notice. • Printed in U.S.A.



Hubbell Lighting, Inc.

0603514 A 2/12