



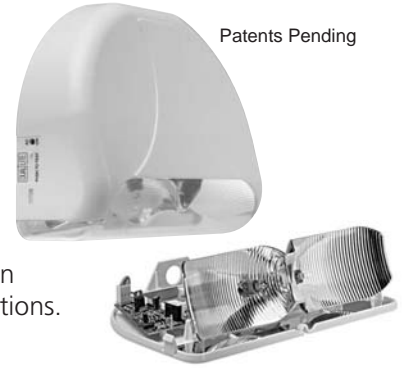
# LiteScape™ Series

Decorative, low profile emergency lighting unit designed for fast, easy installation.

## Mounting Guide

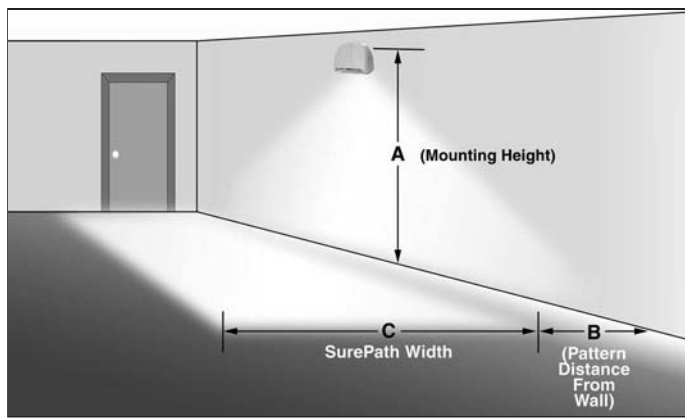
### SurePath™ Technology

The heart of LiteScape's SurePath technology is the patented reflector design. This unique reflector design coupled with the unit's two high-output, 10-watt halogen lamps provide an incredibly bright and evenly distributed illumination pattern. Additionally, a user-selectable reflector adjustment allows a choice of the 3' or 6' wide SurePath illumination patterns. The long, broad and even nature of the SurePath illumination pattern makes it the optimum method of lighting interior paths of egress during emergency conditions.



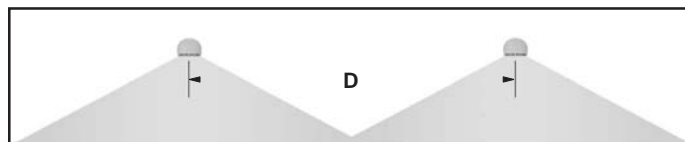
Patents Pending

**Figure 1.**  
SurePath Illumination Pattern Dimensions



Refer to tables at right for SurePath Illumination Pattern dimensions at varying mounting heights.

**Figure 2.**  
Center-To-Center Mounting Distance



Refer to tables at right for multiple unit center-to-center mounting distances at varying mounting heights.

### 3-Foot Standard Illumination Pattern Setting

A <sup>(1)</sup>	B	C	D <sup>(2)</sup>
6.0 ft.	0.6 ft.	3.0 ft.	33.0 ft.
6.5 ft.	0.7 ft.	3.0 ft.	35.0 ft.
7.0 ft.	0.9 ft.	3.0 ft.	38.0 ft.
7.5 ft.	1.1 ft.	3.0 ft.	40.0 ft.
8.0 ft.	1.3 ft.	3.0 ft.	42.0 ft.
8.5 ft.	1.4 ft.	3.0 ft.	43.0 ft.
9.0 ft.	1.6 ft.	3.0 ft.	44.0 ft.
9.5 ft.	1.8 ft.	3.0 ft.	44.5 ft.
10.0 ft.	1.9 ft.	3.0 ft.	45.0 ft.

### 6-Foot Optional Illumination Pattern Setting

A <sup>(1)</sup>	B	C	D <sup>(2)</sup>
6.0 ft.	0.3 ft.	6.0 ft.	31.0 ft.
6.5 ft.	0.6 ft.	6.0 ft.	31.0 ft.
7.0 ft.	0.9 ft.	6.0 ft.	31.0 ft.
7.5 ft.	1.2 ft.	6.0 ft.	30.0 ft.
8.0 ft.	1.4 ft.	6.0 ft.	29.0 ft.
8.5 ft.	1.7 ft.	6.0 ft.	28.0 ft.
9.0 ft.	2.0 ft.	6.0 ft.	27.0 ft.
9.5 ft.	2.3 ft.	6.0 ft.	26.0 ft.
10.0 ft.	2.5 ft.	6.0 ft.	25.0 ft.

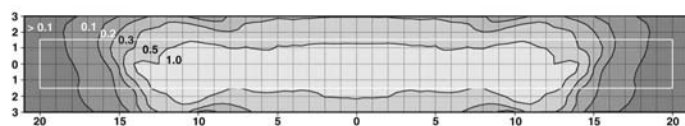
Note: Pattern dimensions shown (C and D) provide an average of 1fc of illumination over the lighting pathway provided in compliance with NFPA 101 Life Safety Code requirements. Refer to Figures 1 and 2.

(1) Measured to center of electrical box.

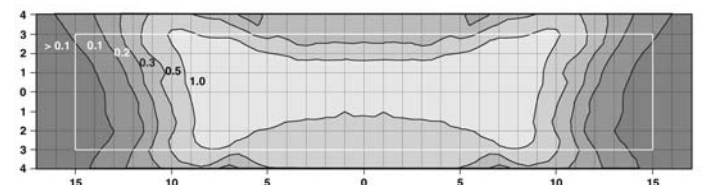
(2) Center to center mounting distance for multiple unit installations. Refer to Figure 2.

## Photometrics

### 3-Foot Standard Illumination Pattern Setting



### 6-Foot Optional Illumination Pattern Setting



- 1) Photometric illustrations based on data provided by Independent Testing Laboratories (ITL), Boulder, Colorado.
- 2) Photometrics shown based on 7.5-foot mounting height and minimum 80-50-20 reflectance values.
- 3) The white rectangular area in photometric illustrations represents normal center to center SurePath egress illumination pattern provided.