



N4X Series

Rugged, self-contained emergency lighting unit designed to perform in damp or harsh industrial environments



Product Selector

Type	Model No.	Voltage	Total Output Watts			
			1 1/2 Hrs.	2 Hrs.	3 Hrs.	4 Hrs.
	N4X2	6	15	--	--	--
	N4X4	6	31	22	15	--
	N4X7	6	50	36	29	22
	N4X14	6	100	79	61	44
	N4X7-12V	12	50	36	29	22
	N4X14-12V	12	100	79	61	44
()	Options (add suffix to model number)					
	I	Spectron self-testing/self-diagnostic electronics				
	-0	Unit supplied without lampheads ⁽¹⁾				
	-1	Unit supplied with one lamphead				
	-L	Shatter containment lamp option ⁽²⁾				
	-A31	3-conductor cord - 120VAC				
	-A32	3-conductor cord - 277VAC				
	Accessories (order separately)					
	40G	Wire guard				
	GNXSB	Matching remote lighting head - single ⁽³⁾				
	GNXSB	Matching remote lighting head - single ⁽³⁾				

(1) Not available with N4X2 unit.

(2) Protective lamp cover safely contains lamp fragments in the event of accidental breakage. Not for use in food processing/preparation areas or hospitals.

(3) Supplied with mounting plate. Specify voltage and wattage when ordering. Example **GNXSB 0618**

Alternate Lamps

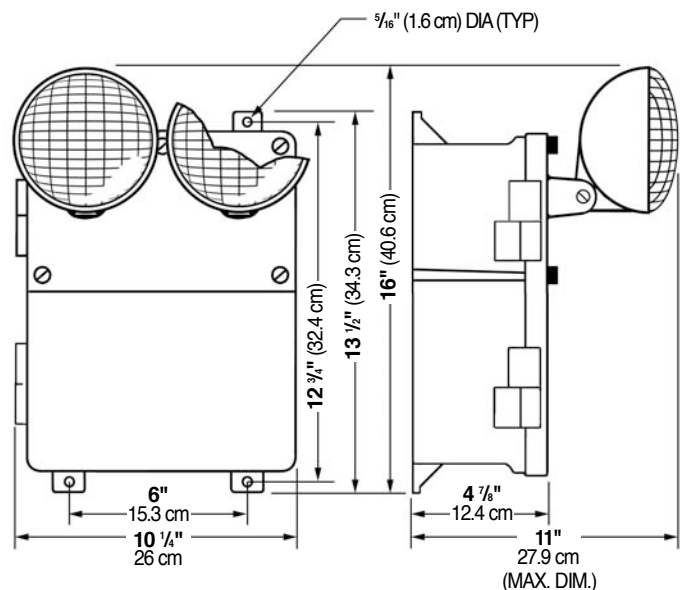
To order alternate lamps in the unit mounted lighting heads, suffix the model number with the alternate lamp voltage and wattage.

Example: N4X7 0618

Features

- Gasketed construction
- Corrosion resistant hardware
- Grey thermoplastic polycarbonate case
- Available in 6- or 12-volt versions
- Fully adjustable lampheads
- Maintenance-free battery
- Capacities up to 100W
- Matching remote fixture
- 120/277VAC operation standard
- Fully automatic, solid-state charger
- Low-voltage battery disconnect
- Transformer isolation protection
- Test switch and AC-On light
- 90 minute operation
- Available with Spectron self-testing/self-diagnostic electronics
- Temperature range: 10°C to 40°C (50°F to 104°F)
- UL 924 Listed (Emergency Lighting)

Dimensions



Hubbell Lighting, Inc.

Construction

Housing and Cover: Sealed and gasketed construction. Case and cover constructed of thermoplastic polycarbonate. Battery compartment vented for safety.

Access: Hinged full front cover with stainless steel hardware

Lamp Assemblies: Lamp housings and swivel assemblies constructed of flame-rated, UV stable thermoplastic. The lamp terminals are coated to resist corrosion and the lamp head swivel is sealed from the environment.

Finish Color: Gray

Illumination

Lamp type: Incandescent PAR 36 sealed beam type

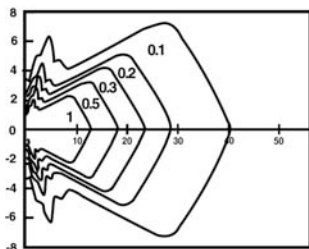
Lamp Voltage: 6- or 12-volt

Lamp Wattage: 7.2W (6V models), 9.0W (12V models)

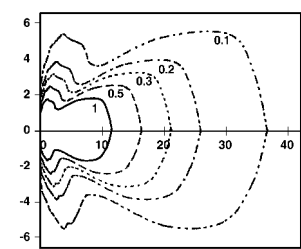
Rated Lamp Life: 100 hours

Photometrics

6-volt, 7.2 watt SBT lamp



12-volt, 9.0 watt SBT lamp



Feet from lamp (measured on axis)

(horizontal isofootcandle distribution)

Remote Fixtures

Standard matching remote fixtures are GNX Series. Other remote head and fixture types are also available.

Installation

Unit Wall Mounting: Units are provided with pre-drilled mounting flanges for wall or beam mounting. The design permits top conduit entry for power and remotes. Drilling templates are provided.

Wiring: All AC and DC connections made inside of housing using standard connection hardware. Connections for remote fixtures are fused.

Electronics

Input: 120/277VAC, 60 Hz (standard)

Built in-Protection: Transformer isolation and low voltage battery disconnect

Charger: Fully automatic, constant voltage, current limited

Transfer: Electric relay

Remote Lamp Connection: Fused leads

Battery Recharge Cycle: Per UL time standards

Electronics (cont.)

Test Means: Sealed test switch

Indicators: Sealed AC-ON indicator

Battery

Type: Maintenance-free lead-acid

Operating Temperature Range

All models: 10° to 40°C (50°F to 104°F)

Power Consumption

All Models: 20 watts maximum

Compliances

UL 924 and NFPA-101 (all models)

Warranty

Standard Models:

Unit and Electronics: 3 years full

Battery: 3 years full, 3 years pro-rata (6 years total)

Spectron Models:

Unit and Electronics: 5 years full

Battery: 5 years full, 5 years pro-rata (10 years total)

Suggested Specifications

Emergency lighting shall be provided by a Dual-Lite N4X Series model _____ designed for installation in damp or corrosive environments. Construction shall be of thermoplastic polycarbonate in gray finish with matching hinged front cover. Unit battery compartment shall be vented for safety. Units shall be provided with pre-drilled mounting flanges for wall or beam mounting. The design will permit top conduit entry for power and remotes. Drilling templates shall be provided. Unit design will allow universal 120/277VAC, 60 Hz operation standard. Total unit output capacity shall be ___ watts. Emergency illumination will be provided by (one)(two) unit mounted (6-volt, 7,2 watt)(12 volt, 9 watt) sealed beam type lighting heads. Lamp housings and swivel assemblies shall be constructed of flame-rated, UV stable thermoplastic in a gray finish. The lamp terminals will be coated to resist corrosion and the lamp head swivel shall be sealed from the environment.

Emergency components will include a fully automatic battery charger, a (6-volt)(12 volt) maintenance-free lead-acid battery, a sealed AC-On indicator light and test switch. The unit charger will be capable of recharging the battery within acceptable UL time standards. Emergency operation must be provided for a minimum of ___ hours. Connections for remote lighting fixtures shall be fused. Units must comply with all UL 924 and NFPA 101 Life Safety Code requirements. Dimensions to be 16" (40.6 cm) high x 10.25" (26.0 cm) wide by 4.875" (12.4 cm) deep.

Optional equipment will include: _____